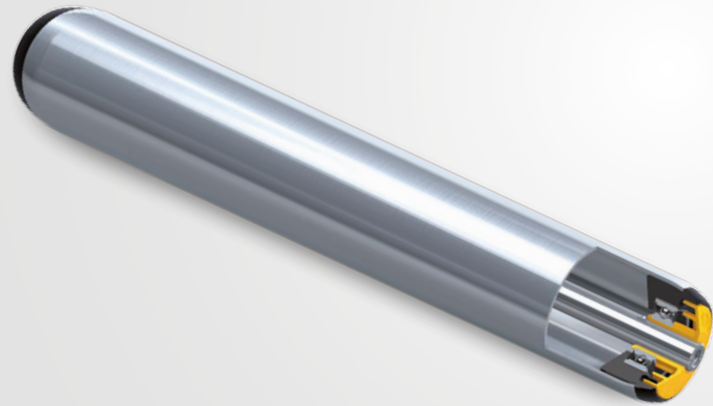


Interroll Rollers

1700 Series Roller



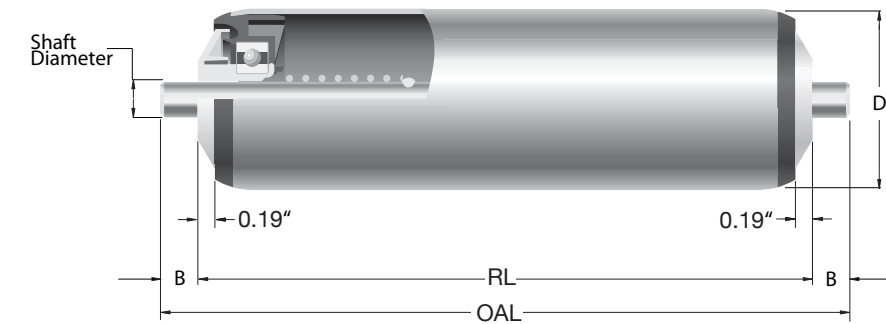
Bearings

- Precision steel standard, optional stainless steel bearings
- Polymer bearing cartridge contains a labyrinth seal to protect against contaminants
- Maximum recommended speed 400 FPM

Applications

- Line shaft conveyor
- Belt driven live roller conveyor
- Motorized roller conveyor

Dimensions



Optional Features

- PVC or polyurethane sleeving for 1.9" OD
- 1/8" radius O-ring grooves for 1.38" OD
- 3/16" radius O-ring grooves for C/S and S/S 1.9" OD
- Polymer tapered sleeves for curve applications 1.9" OD
- Poly-Vee and Poly-O bearing housings for 1.9" OD
- Taper Hex shafts for 7/16" hex punched conveyor frames
- Metric sizes available

Typically BF = RL + 0.12"

Technical data

General technical data, 1700 Series Roller

NOTATION
 CS= CARBON STEEL
 S/S = STAINLESS STEEL
 ED&T= END DRILLED & TAP
 RL= ROLLER LENGTH
 OAL = OVERALL LENGTH
 BF= BETWEEN FRAMES
 B = SHAFT EXTENSION

Tube diameter (D)	Tube material	Wall thickness	Shaft Options													
			B	N/A	.56"	.56"	.56"	.06"	.71"	.06"	.06"	.1"	.1"	.06"	.56"	.06"
1.38"	Galvanized C/S	.049"	●	●					●	●						
1.9"	Polished S/S	.065"	●	●												
	Gray PVC	.110"	●		●	●	●	●			●	●	●	●		
	Polyethylene anti-litho	.110"	●		●	●	●	●			●	●	●	●		
	Mill finished aluminium	.065"	●		●	●	●	●			●	●	●	●		
	Mill finished C/S	.065"	●		●	●	●	●			●	●	●	●		
	Galvanized C/S	.065"	●		●	●	●	●			●	●	●	●		
2.5"	Galvanized C/S	.083"			●	●	●				●	●	●	●		
2.5"	Gray PVC	.125"			●	●	●				●	●	●	●		