

CONVEYOR ACCESSORIES

SERIES BU50



Roller track



Application area

The track is universally applicable and suitable for heavy materials. It can be used in gravity conveyors, pushing and also as side guide. Different roller pitches can be selected.

Heavy materials

The track can be designed with steel rollers if heavy materials have to be moved.

Sensitive materials

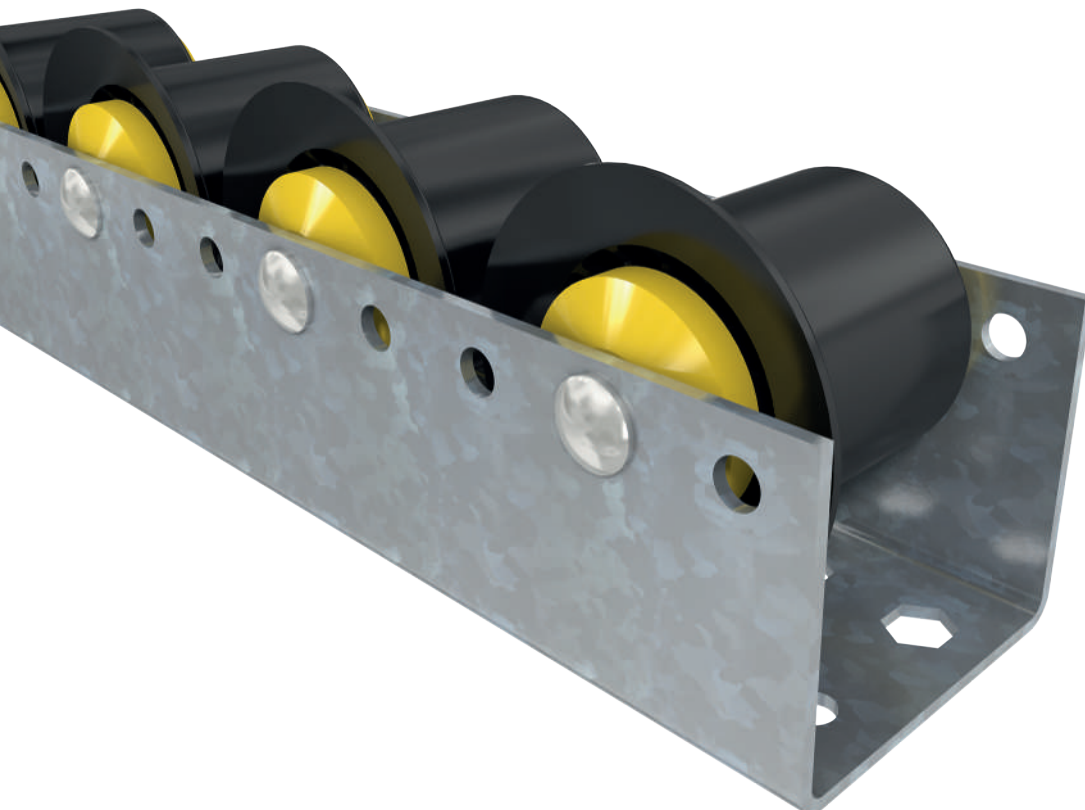
To transport goods with critical surfaces, polymer rollers can be used which minimize the risk of damages. Polymer rollers are also available in a flange design.

Robust construction

Robust rollers of series 1700 with a diameter of 50 mm are used in the track. The rollers are riveted in the profile.

Good corrosion protection

The roller track is made of zinc-plated steel.





CONVEYOR ACCESSORIES SERIES BU50

Roller track

Technical data

| General technical data | | |
|-----------------------------|---|---|
| Platform | 1700 | 1700 |
| Roller versions | Polymer roller without flange (article number 2901) polymer roller with flange (article number 2911) | Zinc-plated steel roller without flange (article number 2955) |
| Max. load capacity | 5,400 N | 15,500 N |
| Max. conveyor speed | 2 m/s | 2 m/s |
| Roller pitch (P) | 52 mm, 78 mm, 104 mm, 156 mm | 52 mm, 78 mm, 104 mm, 156 mm |
| Temperature range | 0 to +40 °C | -28 to +40 °C |
| Roller track wall thickness | 2.5 mm | 2.5 mm |
| Min. length | 130 mm | 130 mm |
| Max. length | 3900 mm | 3900 mm |
| Load shaft (riveted) | 8 mm | 8 mm |
| Material | | |
| Roller track | Zinc-plated steel | Zinc-plated steel |
| Anti-static version | No | No |

CONVEYOR ACCESSORIES

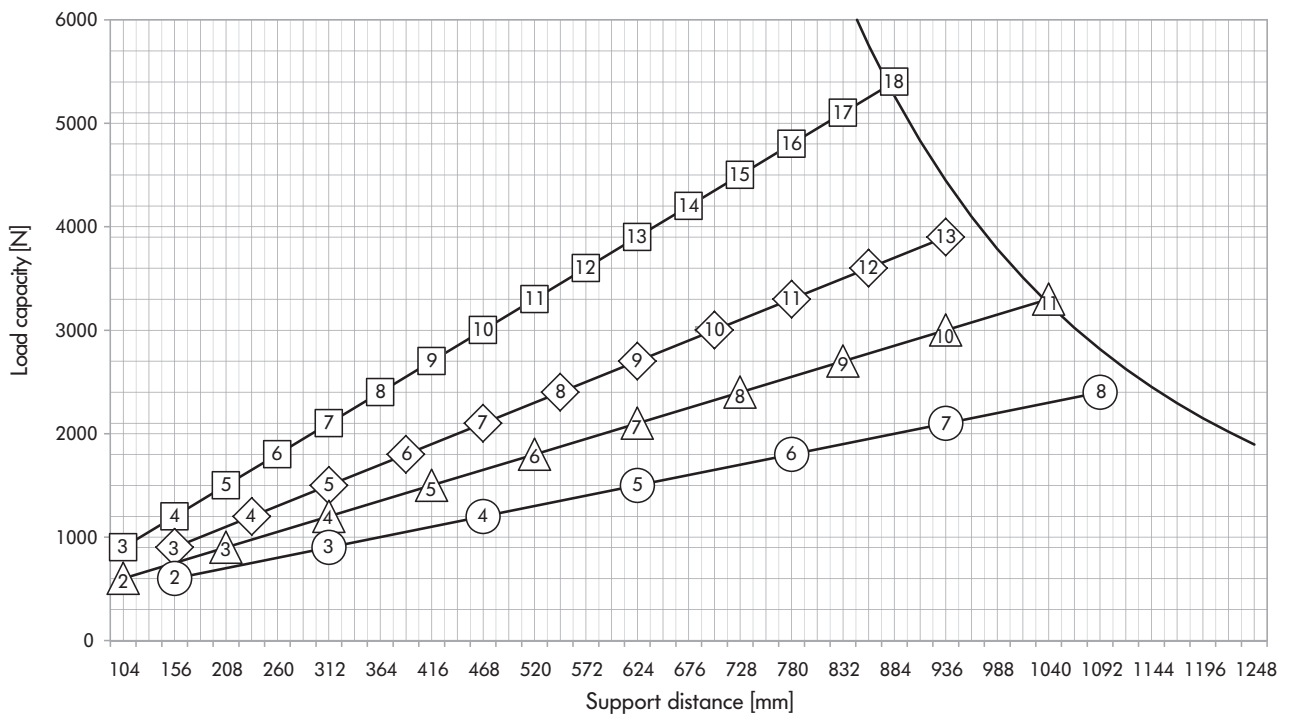
SERIES BU50

Roller track



Load capacities of series BU50

The following load capacity tables refer to a temperature range from $-5\text{ }^{\circ}\text{C}$ to $+40\text{ }^{\circ}\text{C}$ for steel rollers and to a temperature range from $0\text{ }^{\circ}\text{C}$ to $+40\text{ }^{\circ}\text{C}$ for polymer rollers. The maximum static load at $-28\text{ }^{\circ}\text{C}$ to $-6\text{ }^{\circ}\text{C}$ measures 350 N.



- BU50 profile with max. 2 mm bending
- Number of rollers with 52-mm pitch
- ◇ Number of rollers with 78-mm pitch
- △ Number of rollers with 104-mm pitch
- Number of rollers with 156-mm pitch

Fig.: Roller track with polymer rollers



CONVEYOR ACCESSORIES SERIES BU50

Roller track

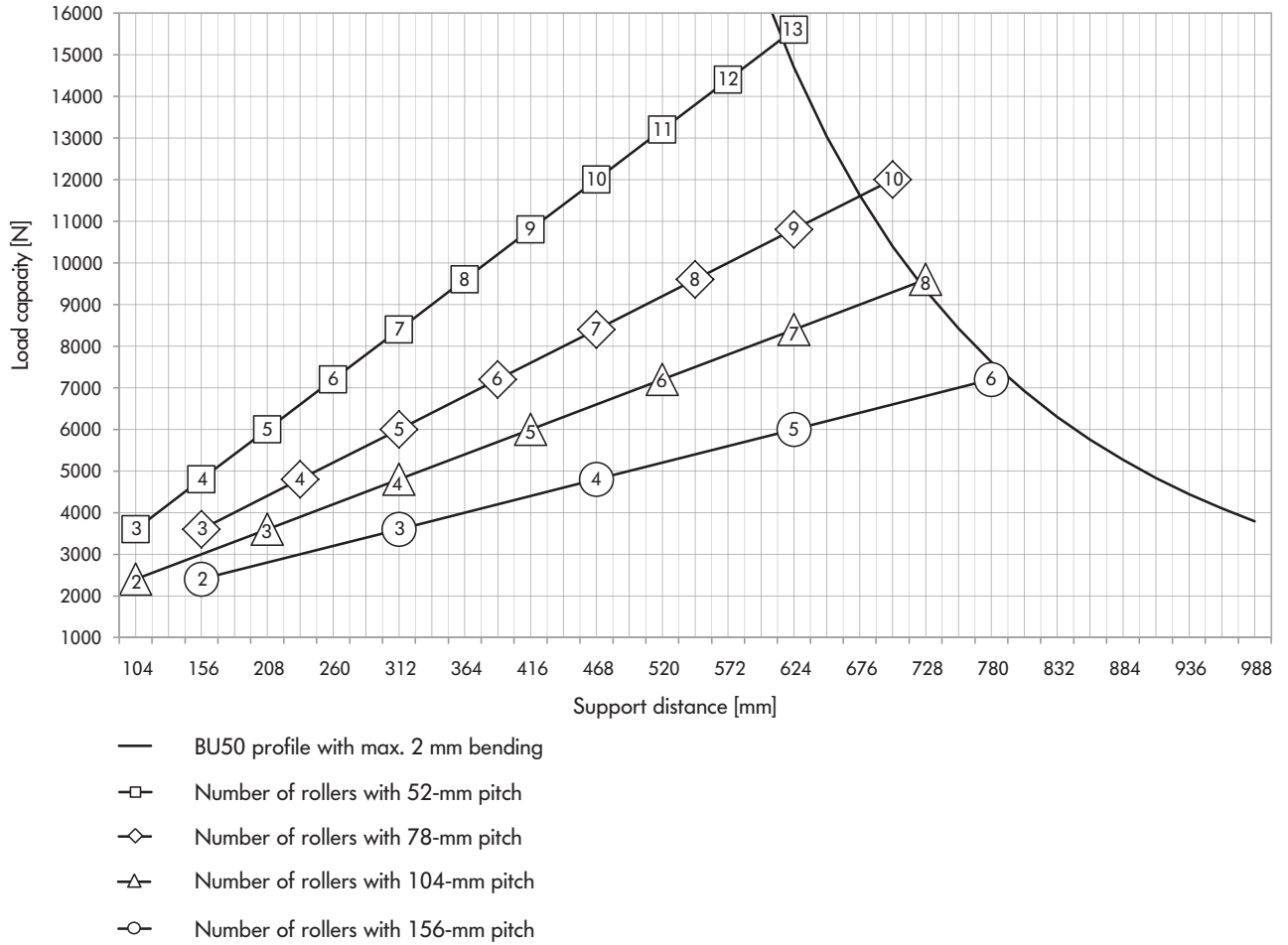


Fig.: Roller track with steel rollers

CONVEYOR ACCESSORIES

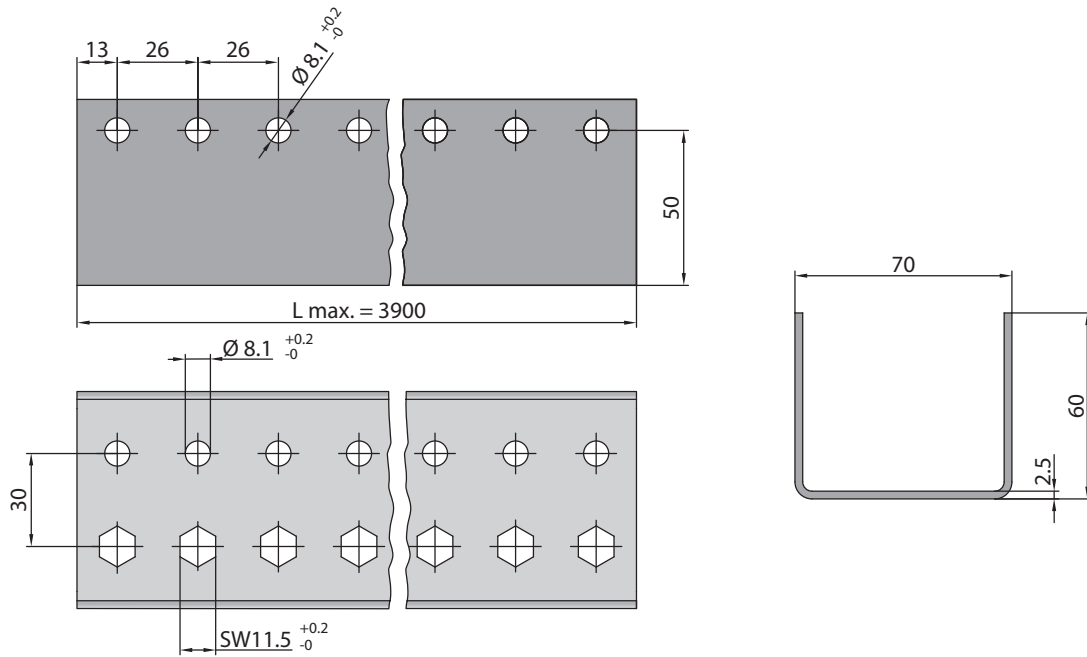
SERIES BU50

Roller track



Dimensions

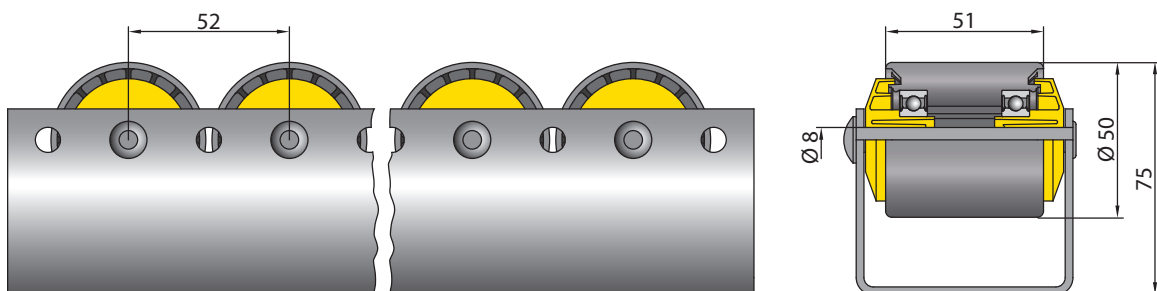
Track without roller



WA = Width across flats

F

Track with polymer rollers

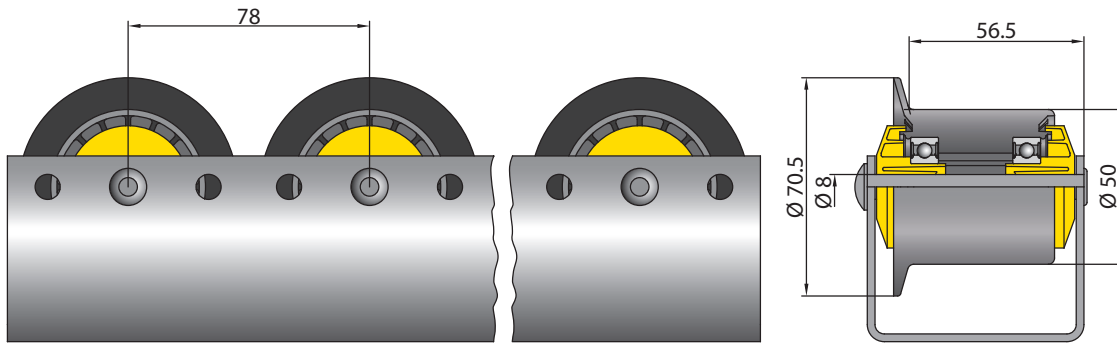




CONVEYOR ACCESSORIES SERIES BU50

Roller track

Track with polymer rollers with flange



Track with steel rollers

