

# CONVEYOR ACCESSORIES SERIES 2600

Pressure roller



### Application area

Suitable for use with conveyors that are driven via flat belts or drive shaft. As belt pressure wheel suitable for flat belts with 20 to 30 mm width. When used on a drive shaft, the round belt guide wheel takes on the function of a friction shaft. A floating fastening on the profile is used.

### Solid installation

The support of both ball bearings is accomplished with a space tube and allows a firm screw connection.

### Good running properties

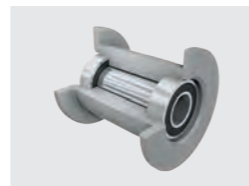
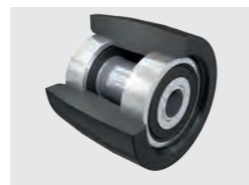
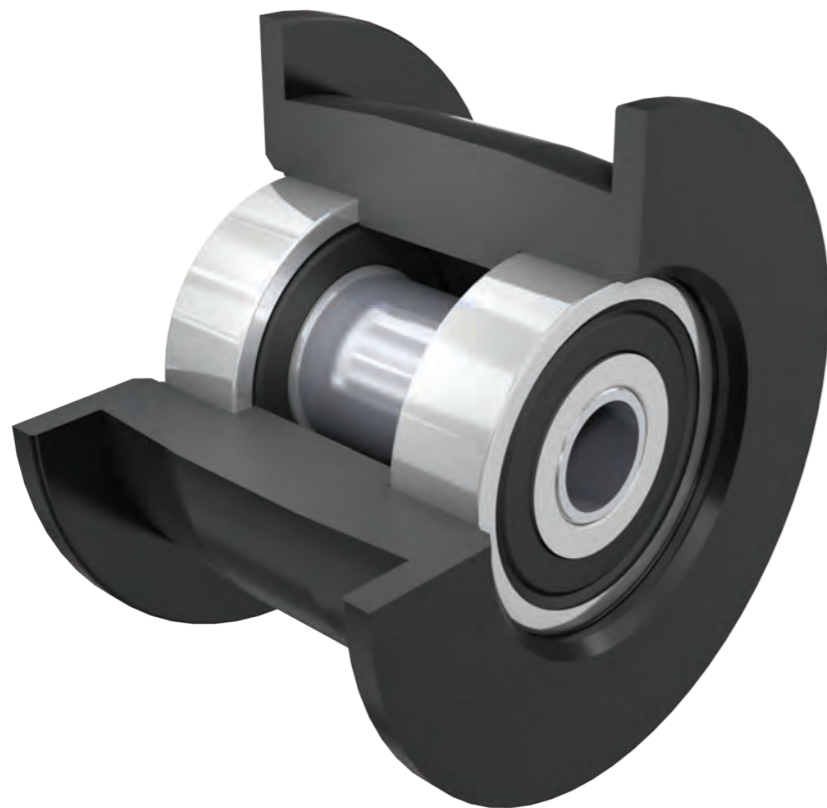
Precision ball bearings of type 6000 2Z and type 688 2Z are used.

### Rust-free variant

For use under moist ambient conditions, a version made of stainless steel is available as an alternative. The slide bearings for the round belt guide wheels consist of polyamide.

### Reliable belt guides

The running surfaces for the belts feature a spherical shape. It allows the belt to self-center in the guides.



# CONVEYOR ACCESSORIES SERIES 2600

Pressure roller



### Technical data

General technical data	
Platform	1700
Max. load capacity	250 N
Max. conveyor speed	2.5 m/s
Temperature range	0 to +40 °C
Material	
Wheels	See load capacity table
Bearing version	See load capacity table
Anti-static version	No

### Load capacities of series 2600

The load capacity table refers to a temperature range of 0 to +40 °C.

Drive element	Bearing version	Flange	Material	Color	Max. conveyor speed [m/s]	Max. static load [N]	Article number
Flat belt	6000 2Z	Yes	Polyamide	Black	2.5	250	S-64000385
	6000 2Z stainless steel	Yes	Polyamide	White	2.5	250	S-64000386
	6000 2Z	No	Polyamide	Black	2.5	250	S-64000388
Round belt	Slide bearing	No	Polyoxymethylene	Gray	1.2	120	S-64000182

# CONVEYOR ACCESSORIES

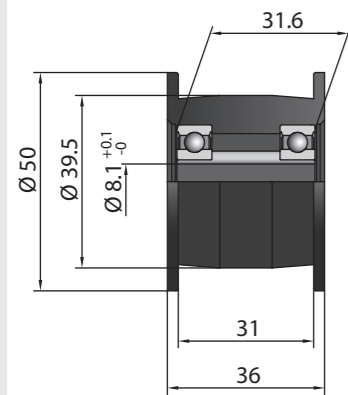
## SERIES 2600

Pressure roller

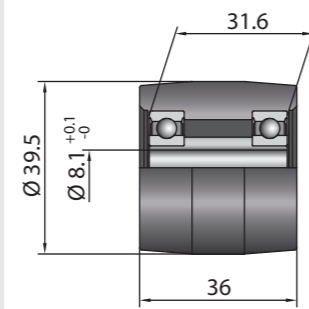


### Dimensions

Flat belt drive and flange



Flat belt drive



Round belt drive

