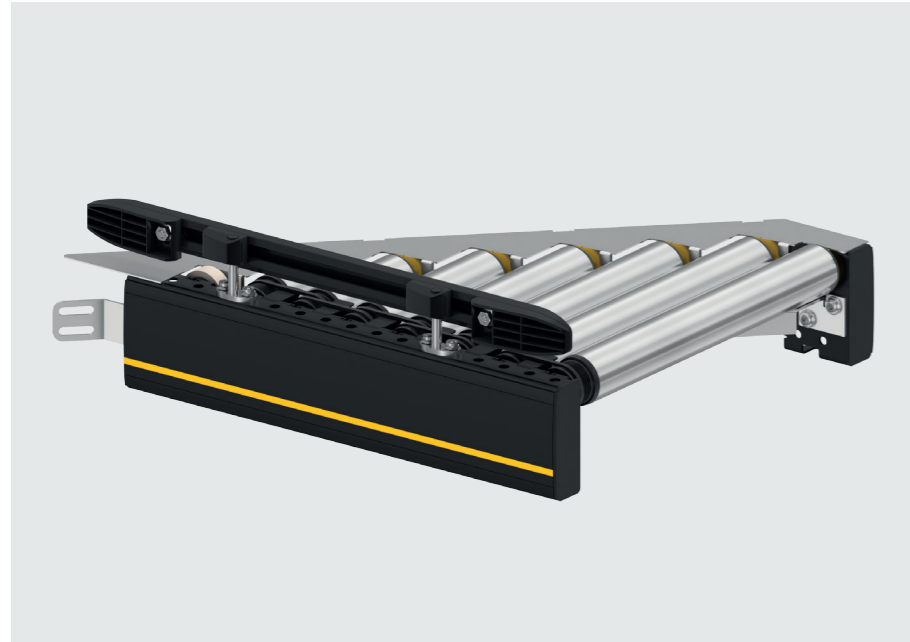
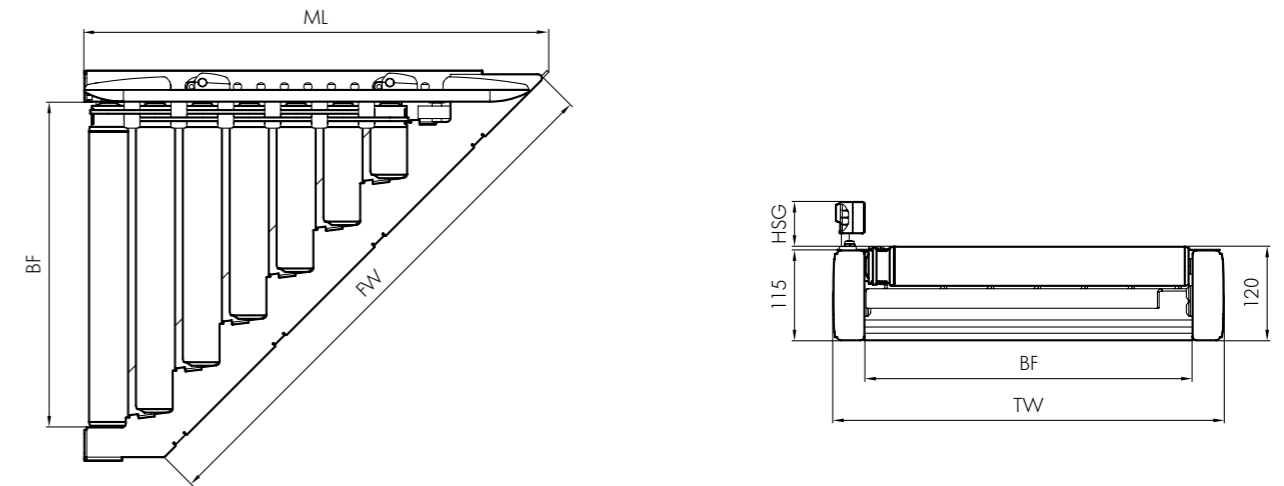


RM 8330

Interroll Roller Conveyor
Merge
24 V powered



Dimensions



Product Description

The merge merges two conveyor lines by placing products in the gaps in the material flow. Alternatively, the merge diverts products from a straight conveyor, e.g., by using an HPD (High Performance Divert).

Technical data

General technical data	Max. load capacity*	50 kg (33 lbs/ft)
	Conveyor speed*	0,1 to 1,0 m/s (at 35 kg)
		0,1 to 0,8 m/s (at 50 kg)
		20 to 197 ft/m (at 77 lbs)
	20 to 157 ft/m (at 110 lbs)	
	Incline/decline	Not suitable
	Ambient temperature	+5 to +40 °C (40 to 105 °F)
Roller	Roller type	Interroll Series 3500
	Roller diameter	50 mm (1.9")
	Roller material	Steel 1.5 mm, zinc-plated
Drive	Rated voltage	24 V
	Motor type	Interroll RollerDrive EC310
	Drive medium	PolyVee belts
	Torque transmission	Roller-to-Roller
	Control	MultiControl

* The combination of maximum values is not always possible.

BF	Between frames	420, 620, 840 mm (16.5", 24.4", 33" nom.) others on request
LW	Lane width	BF (+4.72" / -3.54" per side with flexible side guide)
ML	Module length	See application notes page 111
TW	Module width	BF + 80 mm (3.15")
FW	Opening width	See application notes page 111
α	Angle	30°/45°
P	Roller pitch	60 mm (2.36" nom.)
HSG	Height side guide	35 - 65 mm (1.38" - 2.56")

Scope of supply

- Module is completely assembled and prewired
- Supply incl. 1 sensor per conveyor/zone
- Please order support stands and end caps separately
- Supply incl. bus (communication) cable