

# ROLLER CONVEYOR RM 8210/8212

Straight  
Powered



24V

48V

400V

## Product description

The roller conveyor powered by 400/460 V is available in 2 operating modes.

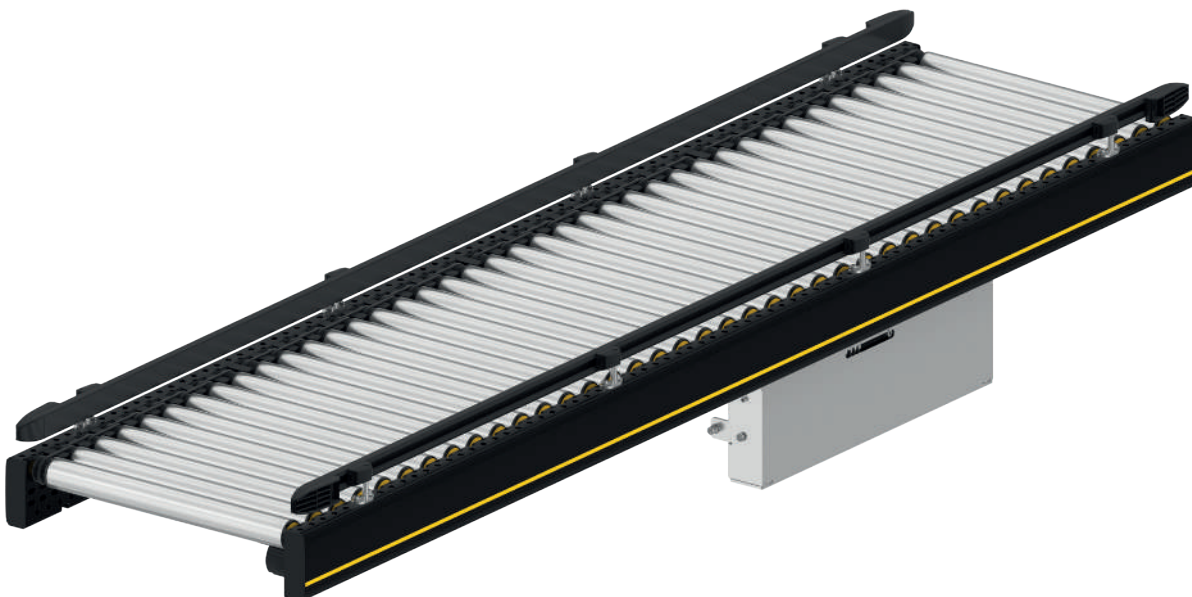
The permanently powered flat belt conveyor RM 8210 serves as a transport conveyor that requires only one 400/460-V drive for long distances up to 15 m.

With the use of electrical actuators, the conveyor can also be operated as zero pressure accumulation conveyor (RM 8212), either completely or partially. These actuators, which can also be retrofitted, are powered by 24-V drives and can be controlled by the Interroll controllers for zero pressure accumulation operation.

## Scope of delivery

- Supply incl. 1 sensor per conveyor/zone
- Delivery without bus (communication) cable for zero pressure accumulation variant
- Module is completely assembled, except for the flat belt
- Zero pressure accumulation version is prewired
- Please order supports and end caps separately

Actuators for generating an accumulation zone can generally be retrofitted. When ordering, please remember that rollers with PolyVee head are required.



# ROLLER CONVEYOR RM 8210/8212

Straight  
Powered

## Technical data

| General technical data                     |   |
|--|---|
| Max. load capacity*                        | 50 kg/m   |
| Transport conveyor speed*                  | 0.1 to 2.0 m/s (at 50 kg/m or zone)                         |
| Zero pressure accumulation conveyor speed* | 0.1 to 1.4 m/s  |
| Incline/decline                            | Not suitable  |
| Ambient temperature                        | +5 to +40 °C  |
| Roller                                     |   |
| Roller type                                | Interroll Series 1700 and Series 3500 (zone conveyor)       |
| Roller diameter                            | 50 mm   |
| Roller material                            | Steel 1.5 mm, zinc-plated                                   |
| Drive                                      |   |
| Rated voltage                              | 400 V   |
| Rated voltage, actuator                    | 24 V  |
| Drive medium                               | Flat belt (transport), PolyVee (zero pressure accumulation) |
| Torque transmission                        | Roller-to-Roller (zero pressure accumulation)               |

\*The combination of maximum values is not always possible.

# ROLLER CONVEYOR RM 8210/8212

Straight  
Powered

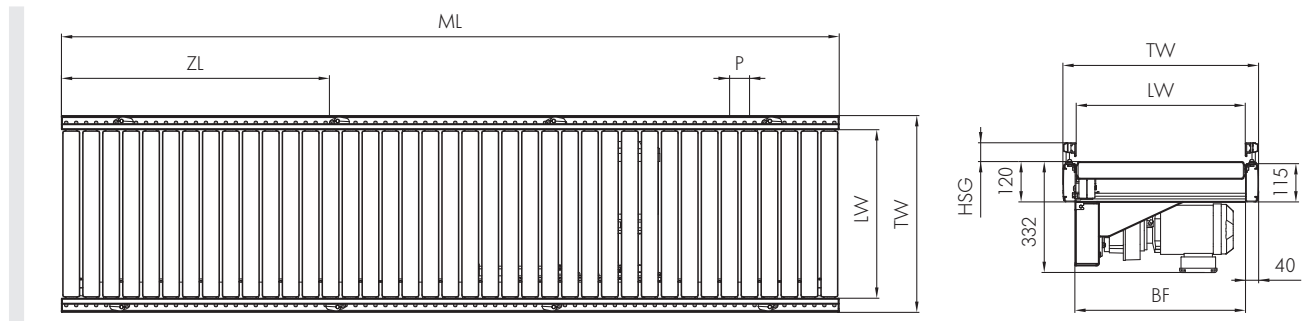


24V

48V

400V

## Dimensions



|     |  |   |
|-----|--|---|
| BF  | Rated width                              | 420, 620, 840 mm (others on request)                              |
| LW  | Lane width                               | BF (+120/-90 mm per side with flexible side guide)                |
| ML* | Transport module length                  | Max. 12000 mm   |
|     | Zero pressure accumulation module length | Max. 6000 mm, ZL x number of zones (max. 6 zones per 400 V drive) |
| ZL  | Zone length (optional)                   | Number of rollers x P   |
| TW  | Module width                             | BF + 80 mm  |
| P   | Roller pitch                             | 60/90/120 mm  |
| HSG | Side guide height                        | 35 – 65 mm  |

\*If a slave curve is driven by a straight conveyor, the max. module length is reduced by 3000 mm, for 2 curves by 6000 mm.