

TURNTABLE PM 9735

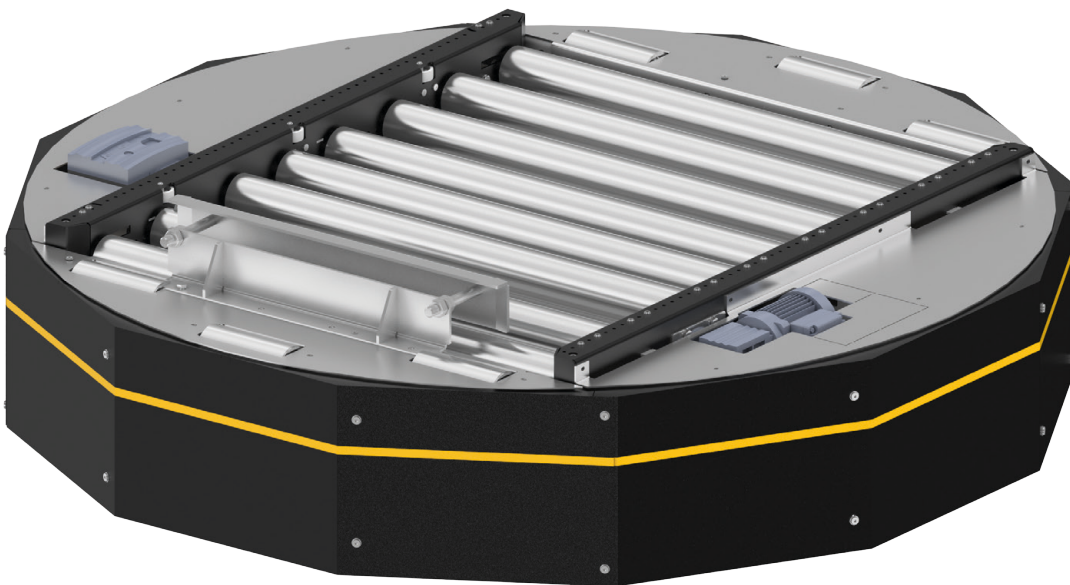


Product description

The turntable is used for change of direction or for turning full and empty pallets. The rotation can total max. 270°, combinations such as -90° to +180° are possible. The efficient turning motion is realized using a precision roller chain, with drive transmitted from a sprocket connected directly to the motor shaft. The incoming and outgoing positions of the turntable are approached via a sensor in the drive.

The efficient turning motion is managed using a robust ball steering ring. The chain tensioning station of the rollers located on the outside allows easy retensioning of the drive chain. Floor irregularities can easily be compensated with adjustable supports.

The turntable can be configured with or without side cover and is optionally available with a pre-wired terminal box.

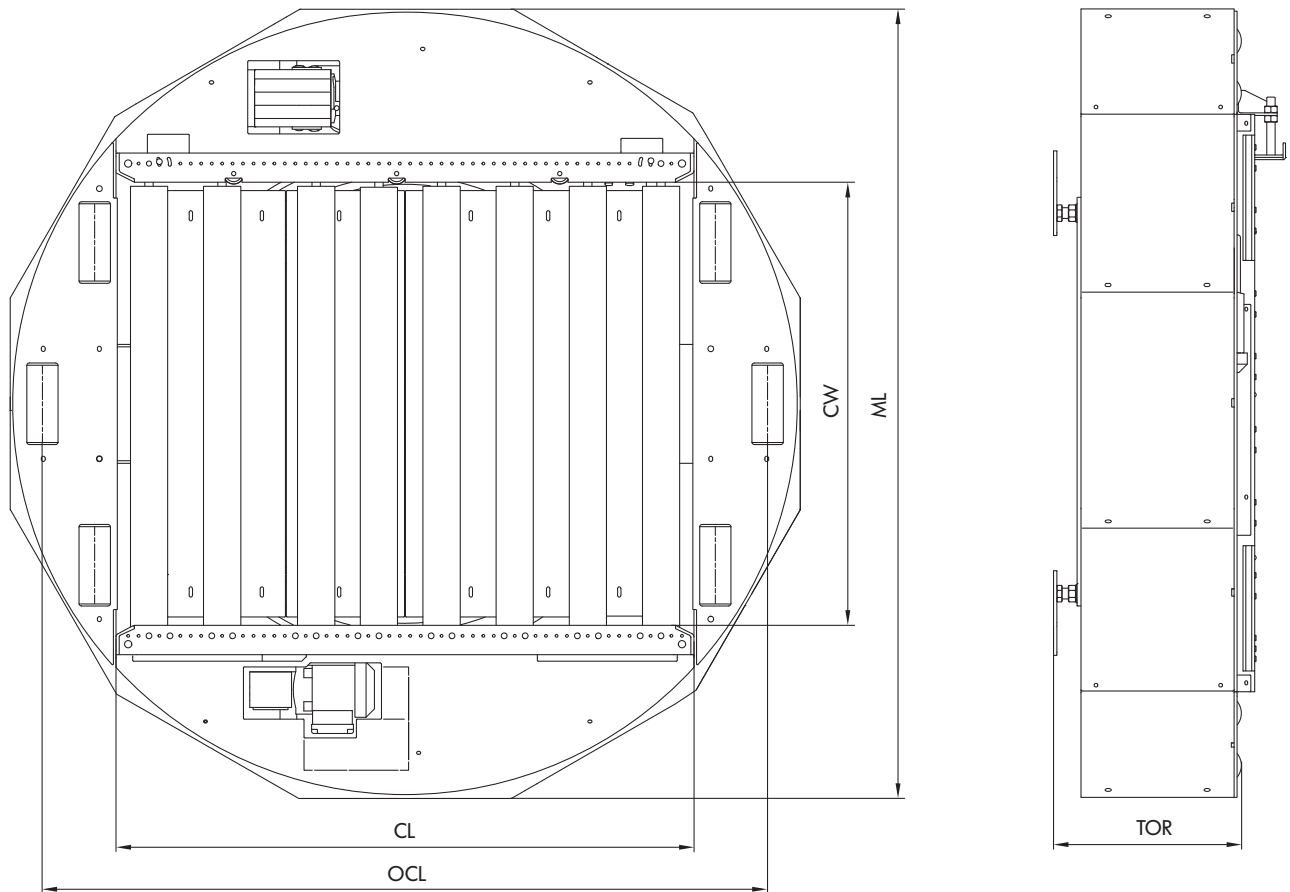


Technical data

General technical data	
Max. load capacity	1500 kg
Conveyor speed	0.1 to 0.5 m/s
Rotational speed (V)	90° in 4 s
Ambient temperature	+5 °C to +45 °C (non-condensing), deep freeze applications on request
Incline/decline	Not suitable
Roller conveyor drive	
Rated voltage	400 V
Power	0.12 to 0.55 kW
Roller chain	5/8" x 3/8"
Turntable drive	
Rated voltage	400 V
Motor type	Gear motor
Power	0.25 to 0.37 kW
Roller chain	5/8" x 3/8"
Rollers	
Roller type	Interroll Series 3950
Roller diameter	89 mm
Sprocket	Z18
Wall thickness of rollers	3 mm
Material	Steel, zinc-plated
Profile	
Dimensions	200 x 70 x 4 mm
Color	Powder coated, in RAL 9005 (main color) and RAL 1023 (accent color)
Material	Steel

TURNTABLE PM 9735

Dimensions



Module conveying width (CW)	1060 mm
Conveying height (TOR)	350 to 1200 mm
Conveyor length (CL)	1380 mm
Overall conveyor length (OCL)	1735 mm
Module length (ML)	1890 mm