

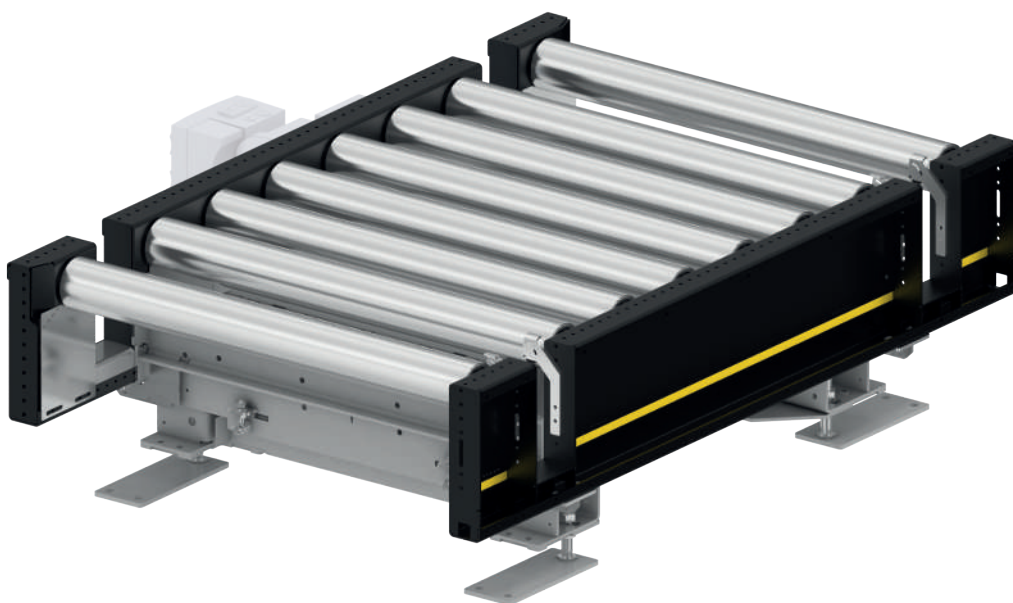
ROLLER TRANSFER PM 9732



Product description

The roller transfer is used for 90° change of direction for horizontal transport of full and empty pallets. The rigid frame profiles of the roller conveyor are coated in the desired RAL color. The roller conveyor drive is available installed on the right side or optionally on the left of the track in the direction of travel (DOT). The force is transmitted via 5/8" x 3/8" precision roller chain.

A solid steel profile frame serves as lifting frame for eccentric lifting cams on ball bearings. The parallel lift occurs electrically and is supported with maintenance-free ball bearings. Floor irregularities can easily be compensated with adjustable supports.

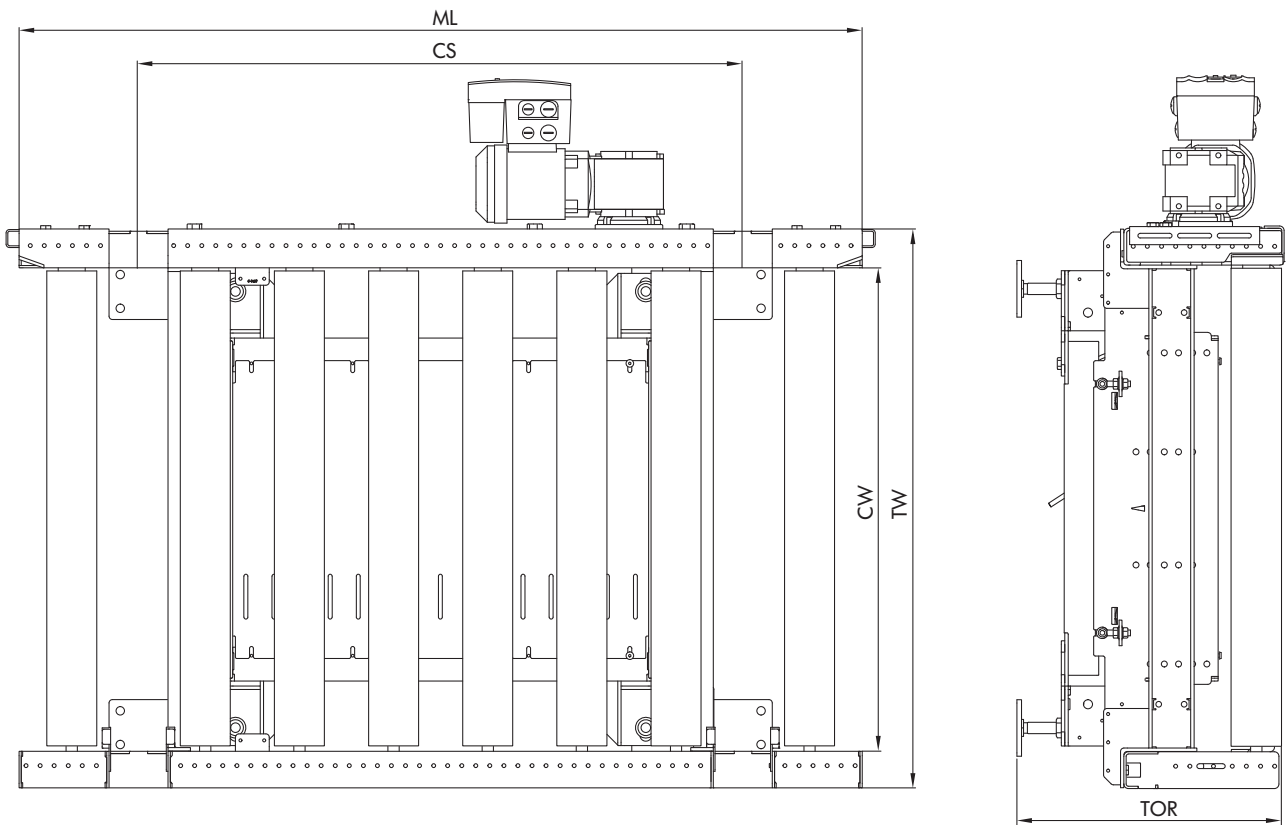


Technical data

General technical data	
Max. load capacity	1000 kg/m
Conveyor speed	0.1 to 0.5 m/s
Max. stroke height	60 mm
Stop positions	3
Ambient temperature	-28 °C to +45 °C (non-condensing) Note: Deep freeze applications are possible only as an option
Incline/decline	Not suitable
Roller conveyor drive	
Rated voltage	400 V
Motor type	Gear motor
Power	0.37 kW
Roller chain	5/8" x 3/8"
Drive stroke	
Rated voltage	400 V
Motor type	Gear motor
Power	0.55 kW
Roller chain	1"
Rollers	
Roller type	Interroll Series 3950
Wall thickness of rollers	3 or 5 mm
Material	Steel, zinc-plated
Profile	
Dimensions	200 x 70 x 4 mm
Color	Powder-coated, all RAL colors are possible
Material	Steel

ROLLER TRANSFER PM 9732

Dimensions



Conveying good width (CGW)	800, 1000, 1200 mm
Module conveying width (CW)	860, 1060, 1260 mm
Module width (TW)	1000, 1200, 1500 mm
Chain spacing (CS)	1075 mm
Conveying height (TOR)	500 to 1200 mm
Module length (ML)	1500 mm