

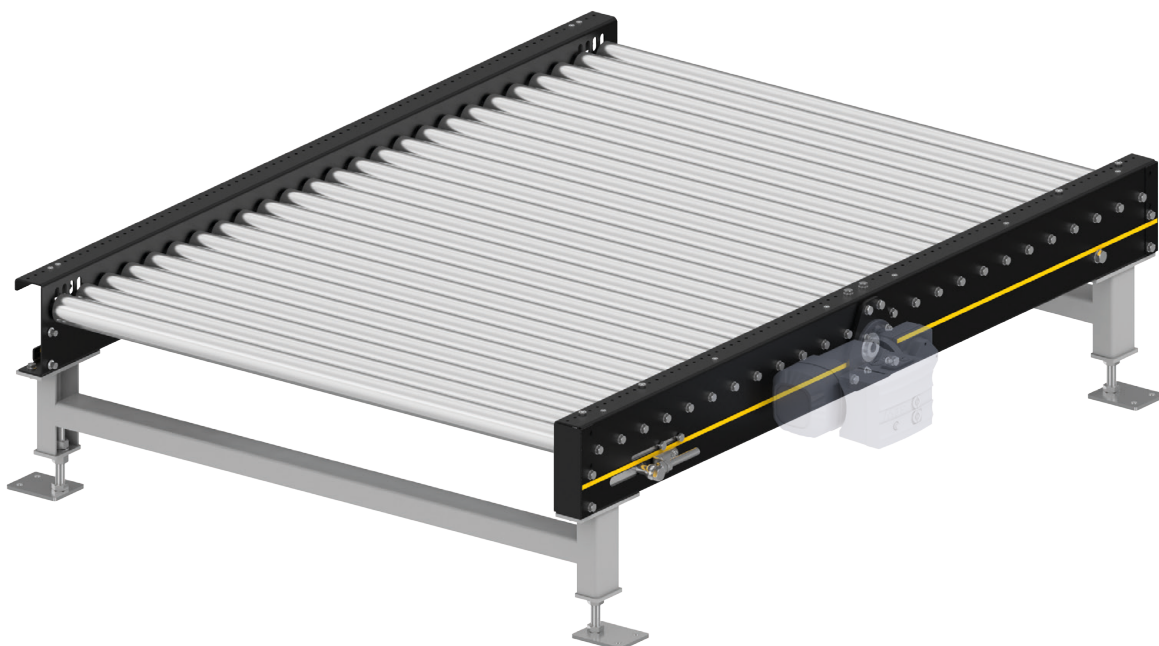
ROLLER CONVEYOR PM 9715



Product description

The roller conveyor is particularly suited for GMA pallets, but also for other pallet types for horizontal transport of full and empty pallets.

The chain tensioning station on the outside allows for easy re-tensioning of the precision roller chain. The drive can be installed on the right or left side in the direction of travel (DOT). Floor irregularities can easily be compensated with adjustable supports.

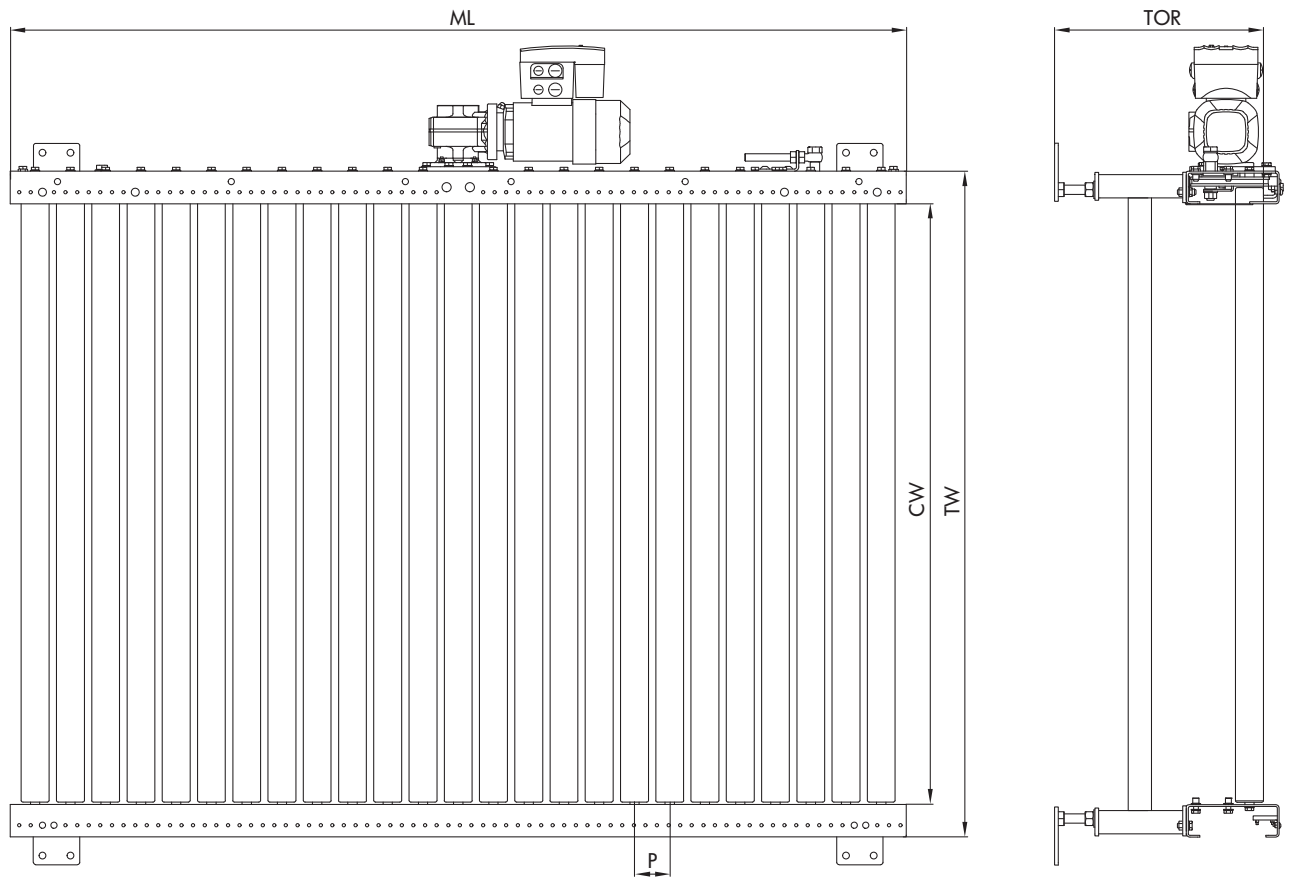


Technical data

General technical data	
Max. load capacity	1250 kg/m or 3000 kg per drive
Conveyor speed	0.1 to 0.5 m/s
Ambient temperature	+5 °C to +45 °C (non-condensing), deep freeze applications on request
Incline/decline	Up to max. 4 % (for certain motor variants only)
Drive	
Rated voltage	400 V
Motor type	Gear motor
Power	0.12 to 0.75 kW
Roller chain	5/8" x 3/8"
Rollers	
Roller type	Interroll Series 3500
Roller diameter	60 mm
Sprocket	Z13
Material	Steel, zinc-plated
Wall thickness of rollers	3 mm
Profile	
Dimensions	200 x 70 x 4 mm
Color	Powder coated, in RAL 9005 (main color) and RAL 1023 (accent color)
Material	Steel

ROLLER CONVEYOR PM 9715

Dimensions



Module conveying width (CW)	860, 1060, 1295 mm
Module width (TW)	1000, 1200, 1435 mm
Conveying height (TOR)	180 or 350 to 1200 mm
Roller pitch (P)	76 mm
Module length (ML)	926 to 2978 mm