

ROLLER CONVEYOR PM 9712

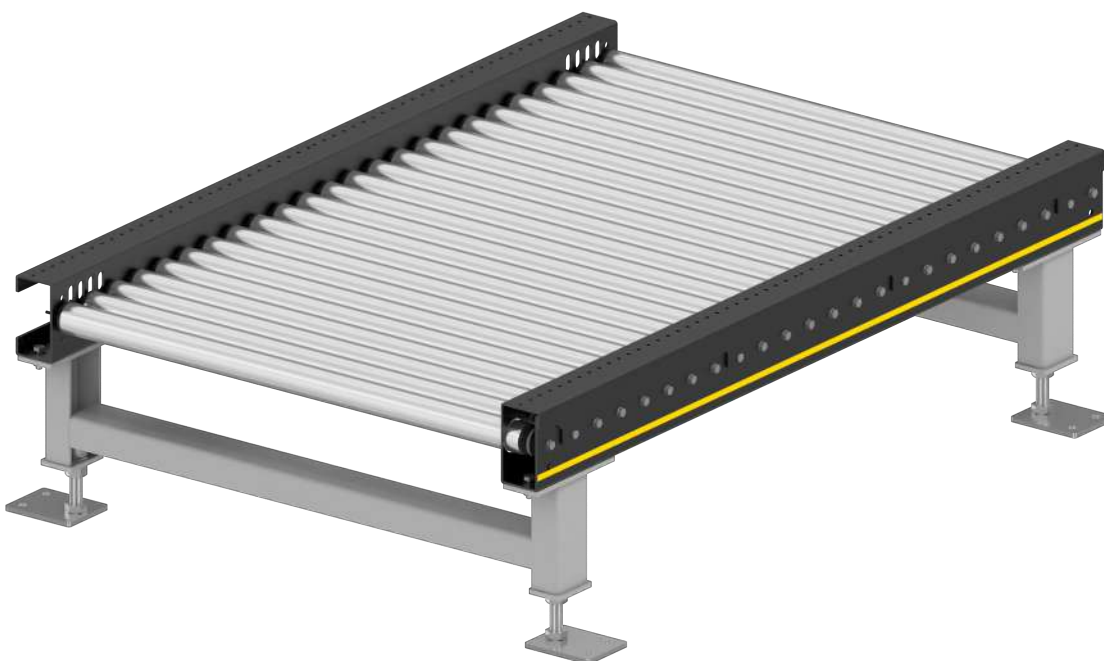


Product description

The roller conveyor is suited for horizontal transport of full and empty pallets. The drive is implemented using a 48-V RollerDrive that is connected to a fixed number of idlers via PolyVee belts. Since the drive is located within the side profiles, the individual modules can be installed very close to each other. This allows for a very compact design.

At the same time, the rigid frame profile serves as side guide. Floor irregularities can easily be compensated with adjustable supports.

Together with MultiControl, it is very easy to implement a zero-pressure accumulation conveyor.

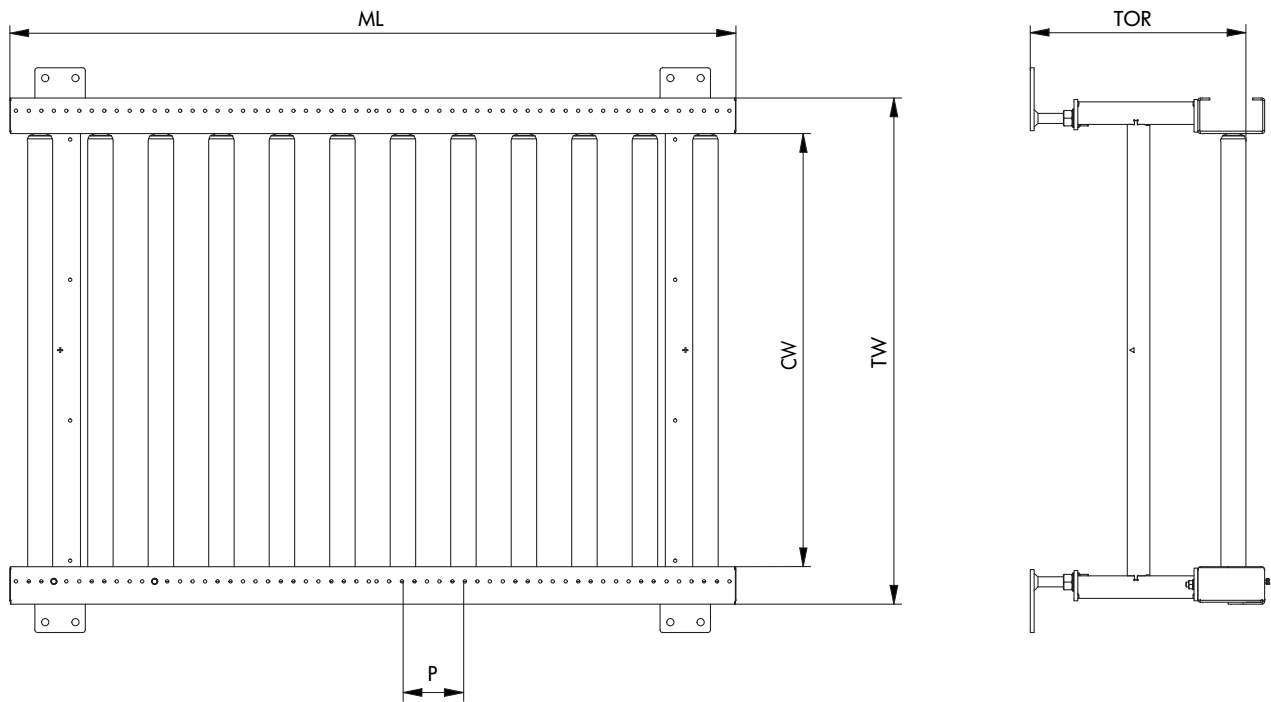


Technical data

General technical data	
Max. load capacity	200 kg/m
Conveyor speed	0.22 m/s
Ambient temperature	0 °C to +40 °C (non-condensing) Note: Deep freeze applications are possible only as an option
Incline/decline	Up to max. 4 % (for certain motor variants only)
Drive	
Rated voltage	48 V
Motor type	RollerDrive EC 5000
Power	0.05 kW
Torque transmission	PolyVee belt
Rollers	
Roller type	Interroll Series 3500
Roller diameter	60 mm
Wall thickness of rollers	2 mm
Material	Steel, zinc-plated
Profile	
Mounting hole pitch	30 mm
Dimensions	132 x 70 x 4 mm
Color	Powder-coated, all RAL colors are possible
Material	Steel

ROLLER CONVEYOR PM 9712

Dimensions



Conveying good width (CGW)	800, 1000, 1200 mm
Module conveying width (CW)	860, 1060, 1260 mm
Module width (TW)	1000, 1200, 1400 mm
Conveying height (TOR)	95 to 1200 mm
Roller pitch (P)	80 to 120 mm
Module length (ML)	240 to 2160 mm