

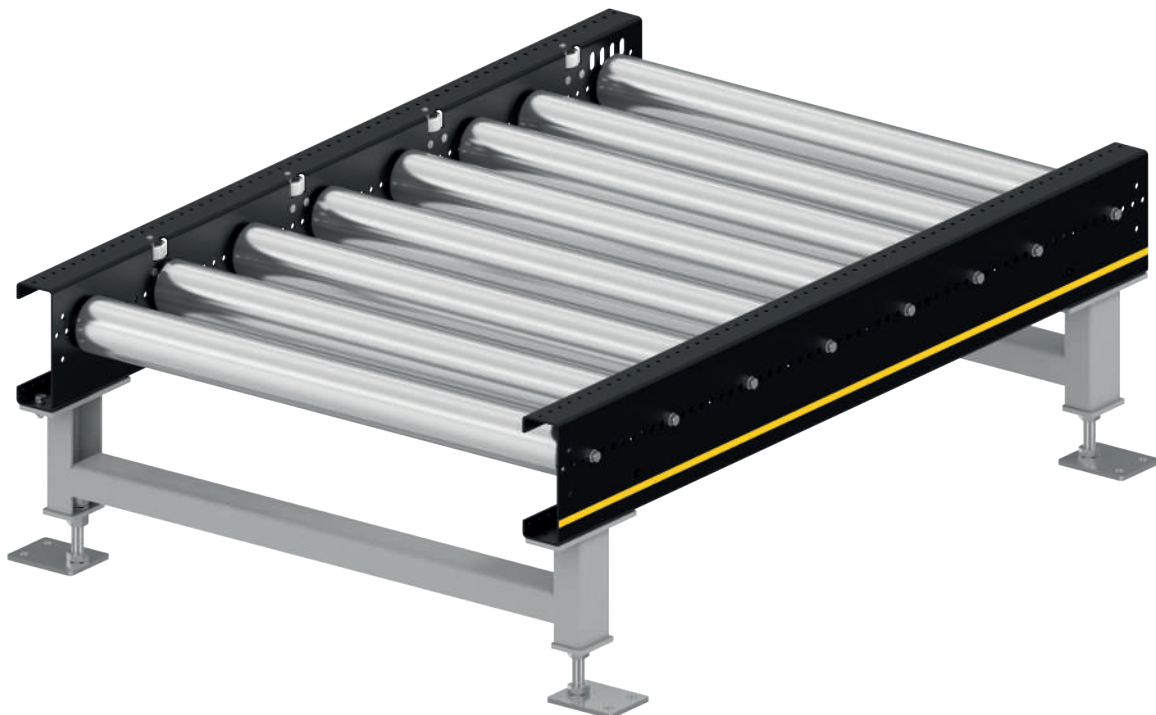
# ROLLER CONVEYOR PM 9711



## Product description

The roller conveyor is suited for horizontal transport of full and empty pallets. Tensioning of the chains is not required because of the chain transmission from roller to roller. At the same time, the rigid frame profile serves as side guide. Floor irregularities can easily be compensated with adjustable supports.

The use of the Interroll Pallet Drive allows a compact design. Since the drive is located within the side profiles, the individual modules can be installed very close to each other. Together with MultiControl and Pallet Control, it is very easy to implement a zero-pressure accumulation conveyor.

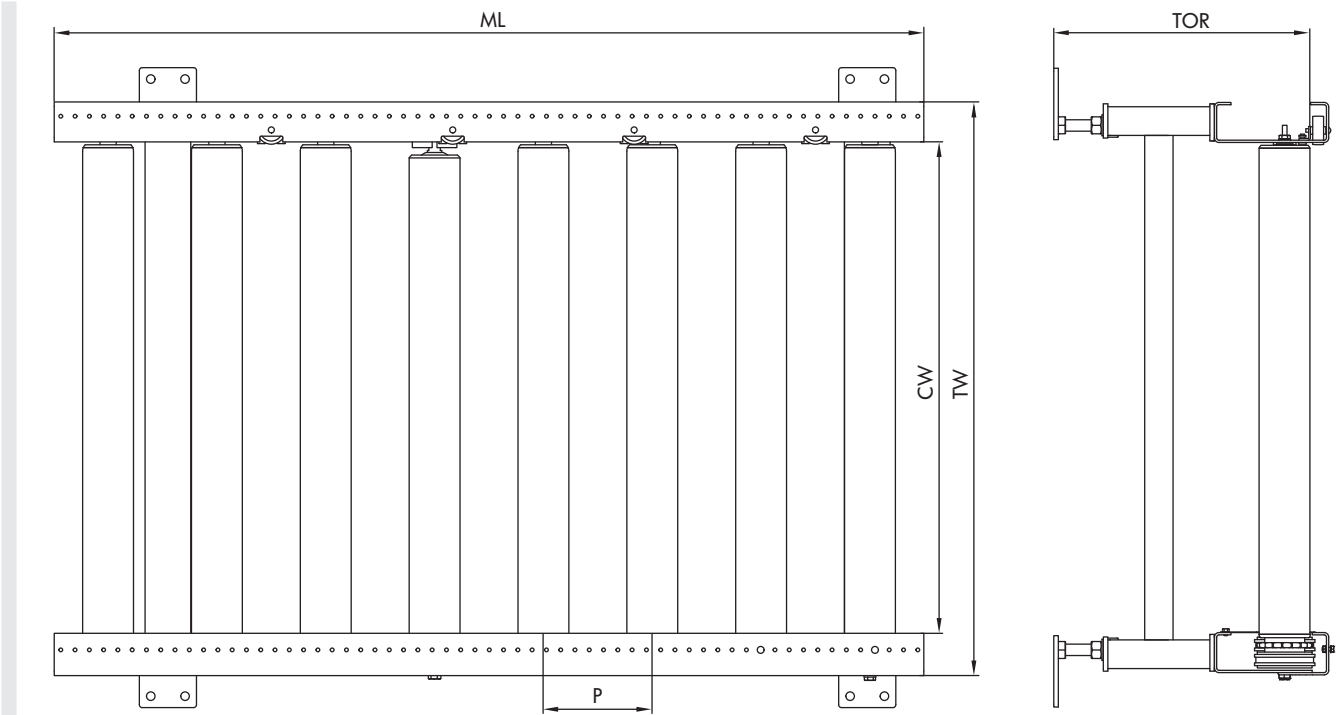


## Technical data

<b>General technical data</b>	
Max. load capacity	1000 kg/m
Conveyor speed	0.22 m/s
Ambient temperature	-5 °C to +45 °C (non-condensing) Note: Deep freeze applications are possible only as an option
Incline/decline	Up to max. 4% (for certain motor variants only)
<b>Drive</b>	
Rated voltage	400 V
Motor type	Pallet Drive
Power	0.07 kW
Roller chain	5/8" x 3/8"
<b>Rollers</b>	
Roller type	Interroll Series 3950
Roller diameter	89 mm
Sprocket	Z18
Wall thickness of rollers	3 mm or 5 mm
Material	Steel, zinc-plated
<b>Profile</b>	
Mounting hole pitch	31.75 mm
Dimensions	200 x 70 x 4 mm
Color	Powder-coated, all RAL colors are possible
Material	Steel

# ROLLER CONVEYOR PM 9711

## Dimensions



Conveying good width (CGW)	800, 1000, 1200 mm
Module conveying width (CW)	860, 1060, 1260 mm
Module width (TW)	1000, 1200, 1400 mm
Conveying height (TOR)	170 to 1200 mm
Roller pitch (P)	127 to 254 mm
Module length (ML)	300 to 5960 mm