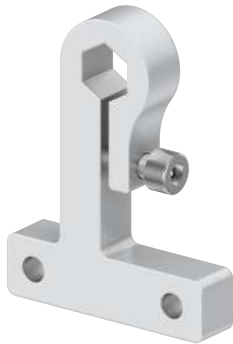


Interlock



The RollerDrive EC5000 is fastened with a ribbed nut on the cable side with a tightening torque 70 Nm. Whenever the ribbed nut cannot be tightened with 70 Nm, the interlock can be used as an alternative.

Before this fastening option can be used, the hexagon hole must first be pushed onto the fastening shaft of the RollerDrive. Once the integrated screw at the interlock is tightened, the shaft in the interlock will no longer move.

The interlock must be fastened at the side profile of the conveyor system by means of two holes.

Article number: S-1120484

Technical data

- Material: Steel, zinc-plated:
- Temperature range: -30 to +40 °C