

# INTERROLL DRUM MOTOR 113C

Compact premium drive for light-duty conveyors

## Product Description

Because of its strength, reliability and zero maintenance, this drum motor is perfect for supermarket applications.

- ✓ Light-duty conveyors
- ✓ Bottle recycling
- ✓ 3-phase or 1-phase AC induction motor
- ✓ Single-rated voltage
- ✓ Integral motor protection
- ✓ Techno-polymer planetary gearbox
- ✓ Low noise
- ✓ Supermarket checkout conveyors
- ✓ Lightweight
- ✓ Maintenance-free
- ✓ Lifetime lubricated
- ✓ Reversible

## Technical Data

Motor data	
Motor type	Asynchronous squirrel cage motor, IEC 34 (VDE 0530)
Insulation class of motor windings	Class B, IEC 34 (VDE 0530)
Voltage	230 V ±5 % (IEC 34/38) 115 V 60 Hz (on request)
Frequency	50 Hz
Internal shaft sealing system	Double-lipped, NBR
External shaft sealing system	Deflection seal, NBR
Protection rate	IP64
Thermal protection	Bi-metal switch
Ambient temperature, 1-phase motor	+0 to +40 °C
Dimensions	
Shell length SL	253 to 702 mm

## Order Information

Please refer to fold-out page at the end of the catalogue.

## Material Versions

You can choose the following versions of drum body components and electrical connections. The versions depend on the material of the components.

Component	Version	Material	
		Aluminium	Mild steel
Shell	Crowned		✓
	Cylindrical		✓
End housing	Standard	✓	
Shaft cap	Standard	✓	
Electrical connector	Plug solutions Straight/90°	✓	
	Plug solutions 90° protected	✓	

Please contact your Interroll customer consultant for further versions.

## Accessories

- Anti-vibration brackets, see p 44
- Idler pulleys, see p 46
- Conveyor rollers, see p 48

## Product Range

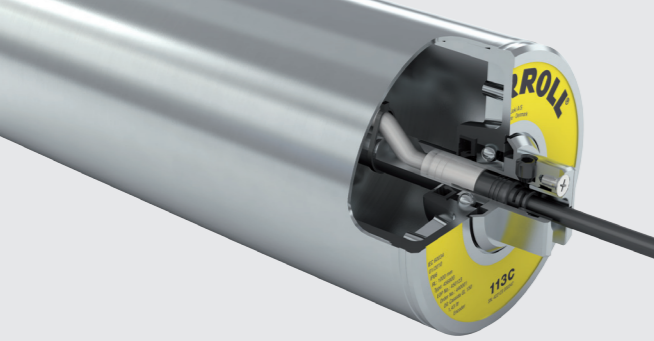
The following tables give an overview of the possible motor versions. Choosing versions without exclamation mark will ensure the lowest cost and fastest delivery. When ordering, please specify the version in accordance with the configurator on the fold-out page.

### Mechanical data for 1-phase motors

P <sub>N</sub>	np	gs	i	v	n <sub>A</sub>	M <sub>A</sub>	F <sub>N</sub>	TE	Min. start weight	SL <sub>min</sub>
kW				m/s	min <sup>-1</sup>	Nm	N	N	Kg	mm
0.06	4	3	63	0.12	28	24	425	2,000	98	253
			55	0.14	33	20	354	2,000	81	253
			49.3	0.16	38	18	319	2,000	73	253
			44.1	0.18	42	16	283	2,000	65	253
0.11	4	3	63	0.12	28	44	779	2,000	180	253
			55	0.14	33	36.7	649	2,000	150	253
			49.3	0.16	38	33	584	2,000	135	253
			44.1	0.18	42	29.3	519	2,000	120	253

P <sub>N</sub>	Rated power	n <sub>A</sub>	Rated revolutions of the shell
np	Number of poles	M <sub>A</sub>	Rated torque of drum motor
gs	Gear stages	F <sub>N</sub>	Rated belt pull of drum motor
i	Gear ratio	TE	Max. belt tension
v	Rated velocity of the shell	SL <sub>min</sub>	Min. shell length

Motor versions



# INTERROLL DRUM MOTOR 113C

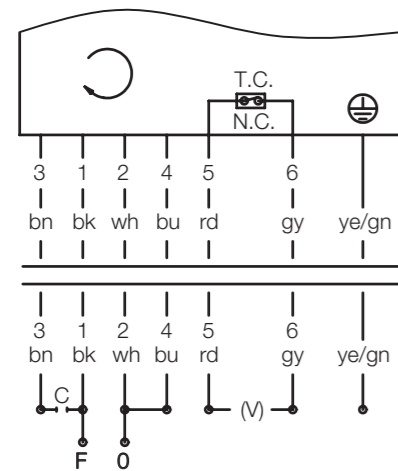
Compact premium drive for light-duty conveyors

## Cable Specifications

Interroll plug solution includes a strain relief piece. Please order the separately available plug cable to enjoy the advantages of plug and play technology and the flexible preinstallation of your drum motor.

- 7 x 0.5 mm<sup>2</sup>
- Wirepins for proper installation
- Ø Cable: 7 mm
- Length: 1.5 / 2 / 3 / 5 m (Other lengths available on request)
- Available with common connectors

## Connection Diagrams



**Note:** When drum motor is without thermal controller (5) and (6) is blind.

**Note:** For CCW rotation interchange brown (3) and blue (4).

## Dimensions

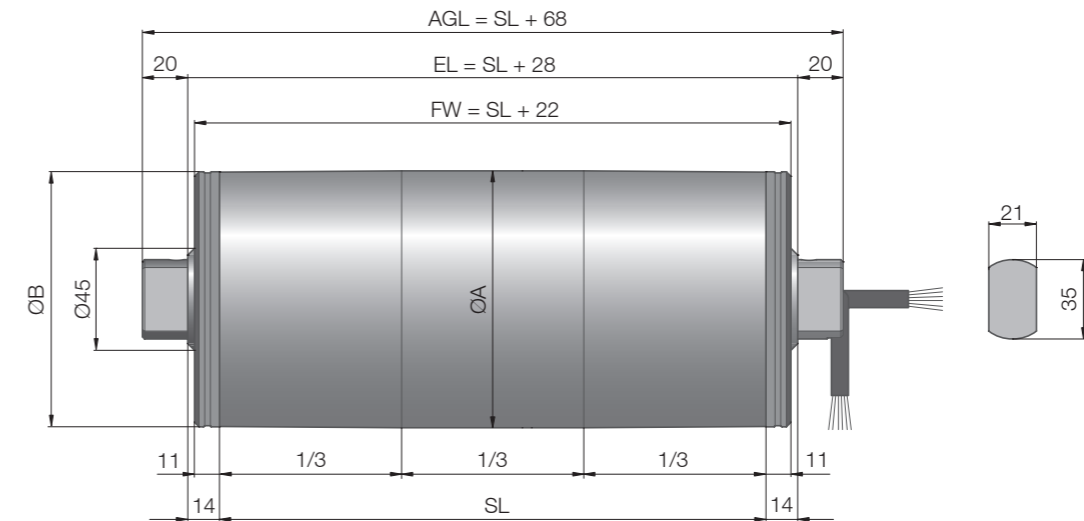


Fig.: Drum motor with straight connector

Type	Ø A mm	Ø B mm
113C crowned shell	113.3	112.3
113C cylindrical shell	113.3	113.3

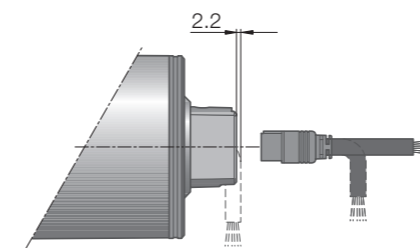


Fig.: Plug

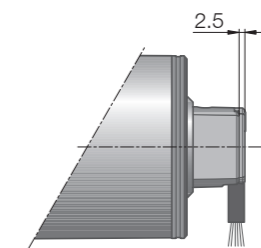


Fig.: Plug, protected

The drum motor's weight depends on its length.

Shell length SL in mm	253	Weight increases by 0.7 kg in 50 mm increments	702
Average weight in kg	6.5		12.8

Standard  
dimensions

Connector  
dimensions

Length and  
weight