

BELT CONVEYORS

BM 8350

Straight
Powered



24V

48V

400V

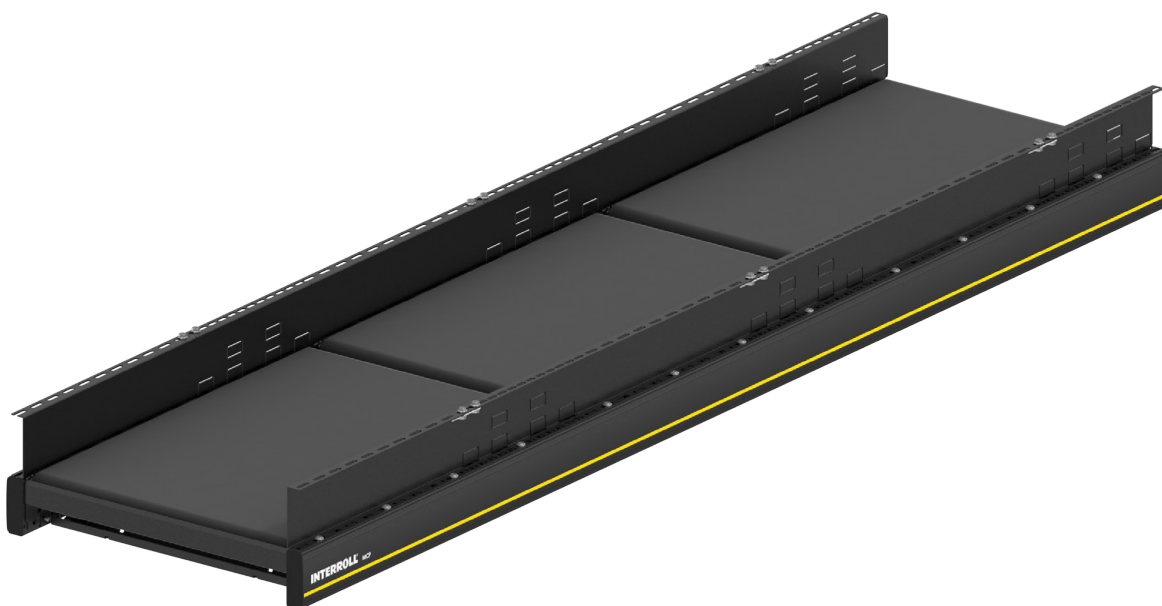


Product description

The Belt Conveyor Light is a belt conveyor that is divided into zones and operates with zero pressure accumulation; its drive is based on the Interroll RollerDrive. It is possible to transport and accumulate small products, as well as products not suitable for roller tracks. Not suitable for reversing operation.

Scope of delivery

- Supply incl. 1 sensor per zone
- The module is partially assembled and pre-wired; the side guides are enclosed separately
- Please order supports and end caps separately



BELT CONVEYORS

BM 8350

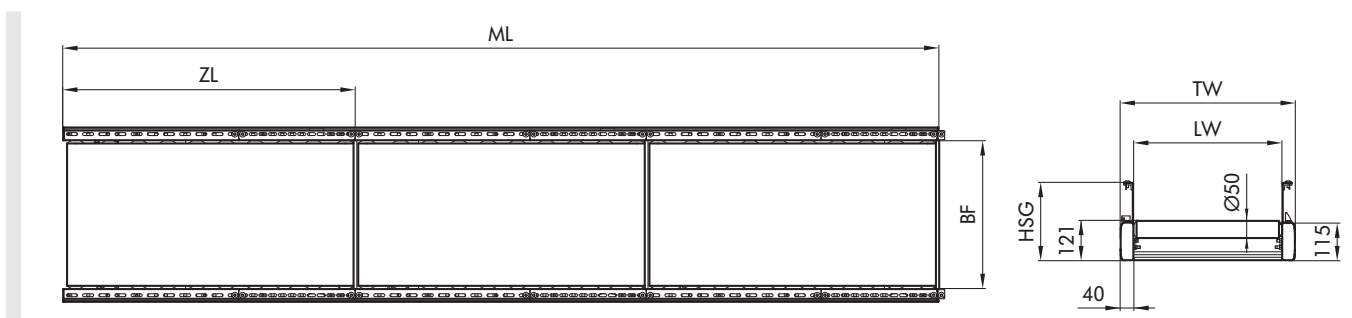
Straight
Powered

Technical data

General technical data	
Max. load capacity per zone*	50 kg
Conveyor speed*	Max. 0.8 m/s
Incline/decline*	Max. 4°
Ambient temperature	+5 bis +40 °C
Drive	
Rated voltage	24/48 V
Motor type	Interroll RollerDrive EC5000
Diameter of drive roller	50 mm
Control	MultiControl
Material	
Conveyor belt	Polyester with PVC coating
Slider bed	Rollers, Interroll Series 1700

*The combination of maximum values is not always possible.

Dimensions



BF	Rated width	420, 620, 840 mm (max. 840 mm) (others on request)
LW	Clear width	BF
ML	Module length	ZL x number of zones, max. 4320 mm
ZL	Zone length	Max. 1080 mm
TW	Module width	BF + 80 mm
P	Roller pitch	90 mm under the belt, 60 mm between the zones
HSG	Side guide height	120 mm