

# BELT CONVEYORS

## BC 1200

Curve



24V

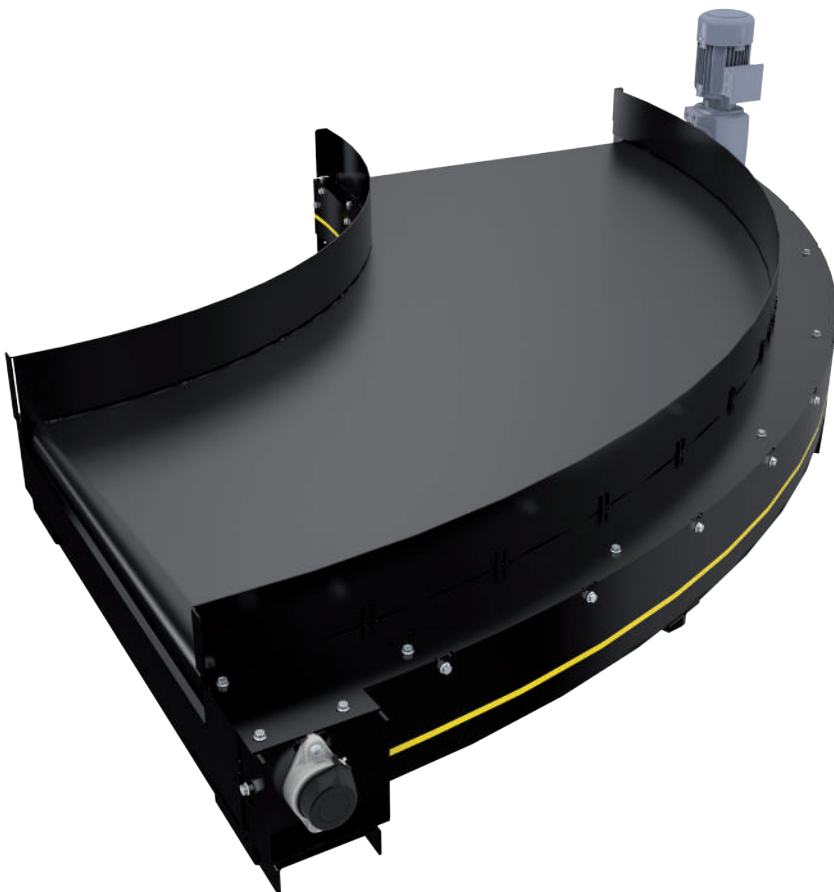
48V

400V

### Product description

With a conveyor speed of 2.5 m/s, the belt curve is designed for high performance and trouble-free operation in different applications. The curves are available in several widths, angles and weight classes.

The belt curves can be operated in higher and lower temperature ranges, which represents a significant advantage compared to common solutions, such as friction-driven conveyors. Another advantage is the fast belt change – for use with mechanical belt connectors as well as endlessly welded belts. Thanks to the sophisticated construction, the drive station does not have to be removed for the belt change, thereby saving time. On top of that, the cylindrical idler pulleys allow for a small gap to the next conveyor, thereby facilitating the transport of small conveying goods.

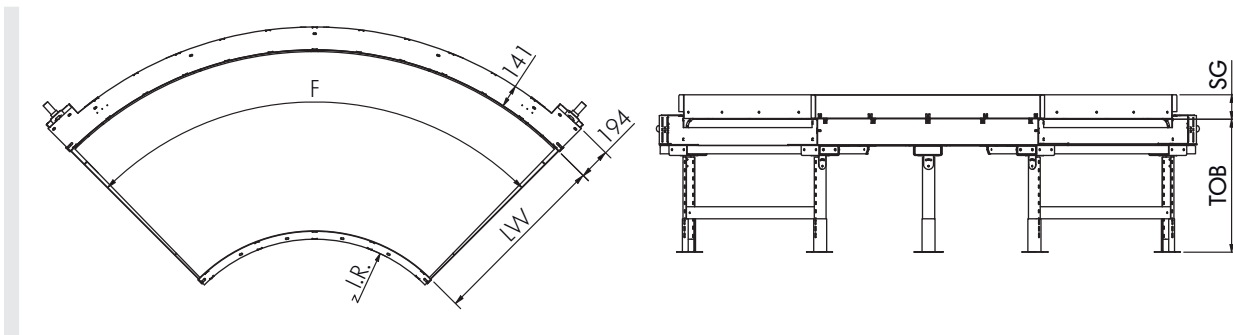


### Technical data

General technical data	
Max. load capacity*	75 kg/m
Rated voltage	400 V
Conveyor speed*	2.5 m/s
Ambient temperature	-15 °C to 55 °C
Material	
Conveyor belt	FLEXAM EF 10/2 0+A22 BLACK AS FR others upon request
Slider bed	3 mm sheet steel
Color	All RAL colors are possible.

\*The combination of maximum values is not always possible.

### Dimensions



F	Bracket	30° – 180°
IR	Inside radius	400 – 1900 mm
LW	Clear width	up to 1200 mm
T.O.B.	Conveying height	217 – 3000 mm
SG	Side guide height	120 – 600 mm
OR	Outside conveying radius	$IR + LW = \text{max. } 2200 \text{ mm}$
	Other sizes on request.	