

# BELT CONVEYORS

## BM 1150 / BM 1151

Driven

24V

48V

400V

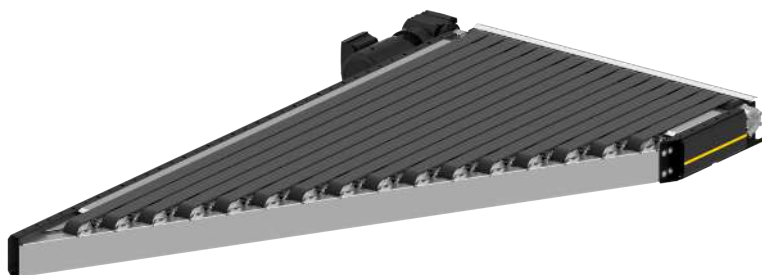
### Product description

The strip conveyor Merge is a conveyor belt with a connecting edge that is angled at 30° or 45°. It allows the merging of two conveyor lines at the corresponding angle. In conjunction with additional sorting elements, it can also separate the material flow.

The belt conveyor is available with a gear motor (BM 1150) or drum motor (BM 1151).

### Scope of delivery

- Module is completely assembled and prewired
- Please order supports and other accessories separately



### Technical data

General technical data	
Max. load capacity	50 kg/m
Max. load capacity per zone	50 kg
Conveyor speed	0.1 to 3.0 m/s
Max. electrical power per zone	0.75 kW
Incline/decline	Not suitable
Ambient temperature	+5 to +40 °C
Merging angle	30° 45°
Drive	
Rated voltage	400 V
Motor type	Drum motor/gear motor

Combination of the maximum values is not always possible.

# BELT CONVEYORS

## BM 1150 / BM 1151

Driven

24V

48V

400V

### Dimensions

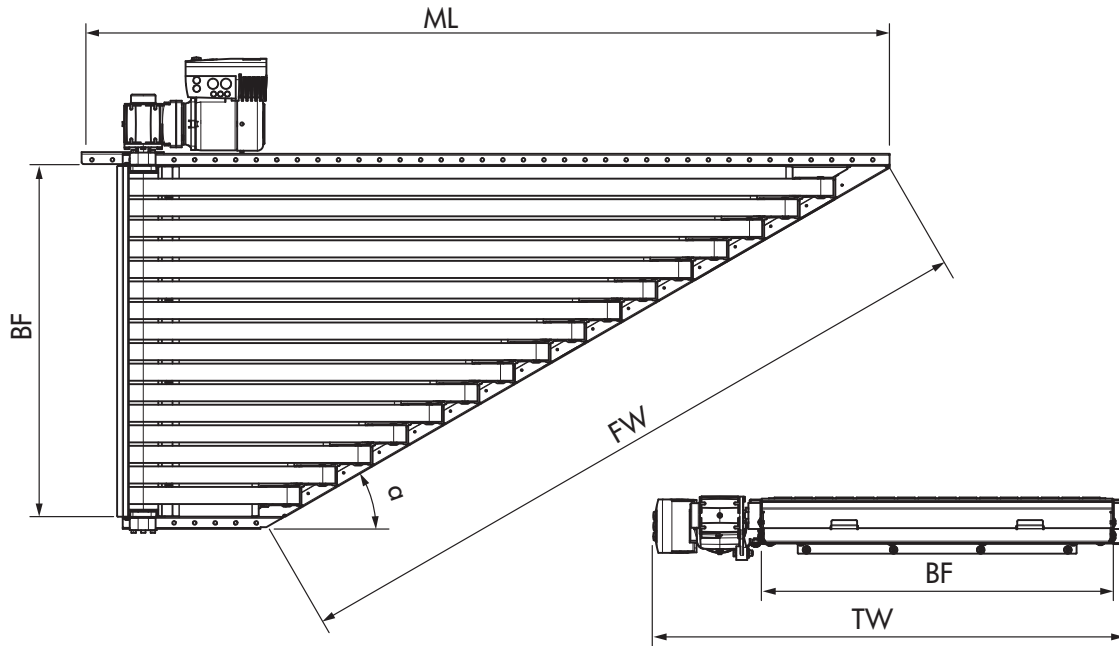


Fig.: Dimensional drawing with gear motor

BF	Rated width	620, 840, 1025, 1225 mm
LW	Clear width	BF
ML	Module length	Depending on the angle, see table below
TW	Module width	BF + 100 mm (drum motor), BF + 375 mm (gear motor)
FW	Opening width	Depending on the angle, see table below
$\alpha$	Bracket	30°/45°
	Side guide height	150, 300, 600 mm

BF [mm]	Angle [°]	ML [mm]	FW [mm]
620	30	1595	1380
	45	1105	679
840	30	1992	1820
	45	1335	1287
1025	30	2308	2190
	45	1518	1549
1225	30	2638	2590
	45	1708	1831