

# BELT CONVEYORS

## BM 1140 / BM 1141

Driven

24V

48V

400V

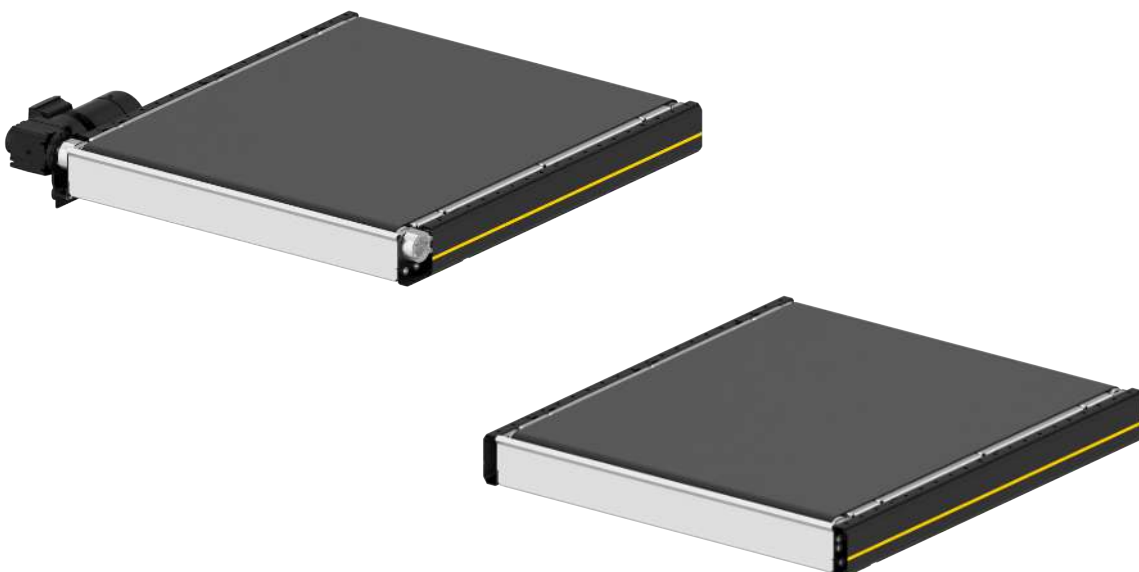
### Product description

The cycle belt conveyors are suitable for dynamic transport and creating gaps between the products. The design enables short, wide belts and high acceleration of the goods. Thanks to the use of drum motors, Interroll offers a compact layout that is perfect for situations where space is limited.

The belt conveyor is available with a gear motor (BM 1140) or drum motor (BM 1141).

### Scope of delivery

- Module is completely assembled, maybe split into sections
- Please order supports and other accessories separately



### Technical data

General technical data	
Max. load capacity	50 kg/m
Conveyor speed	0.1 to 3.0 m/s
Max. electrical power per zone	0.75 kW
Incline/decline	Not suitable
Ambient temperature	+5 to +40 °C
Drive	
Rated voltage	400 V
Motor type	Drum motor/gear motor

Combination of the maximum values is not always possible.

### Dimensions

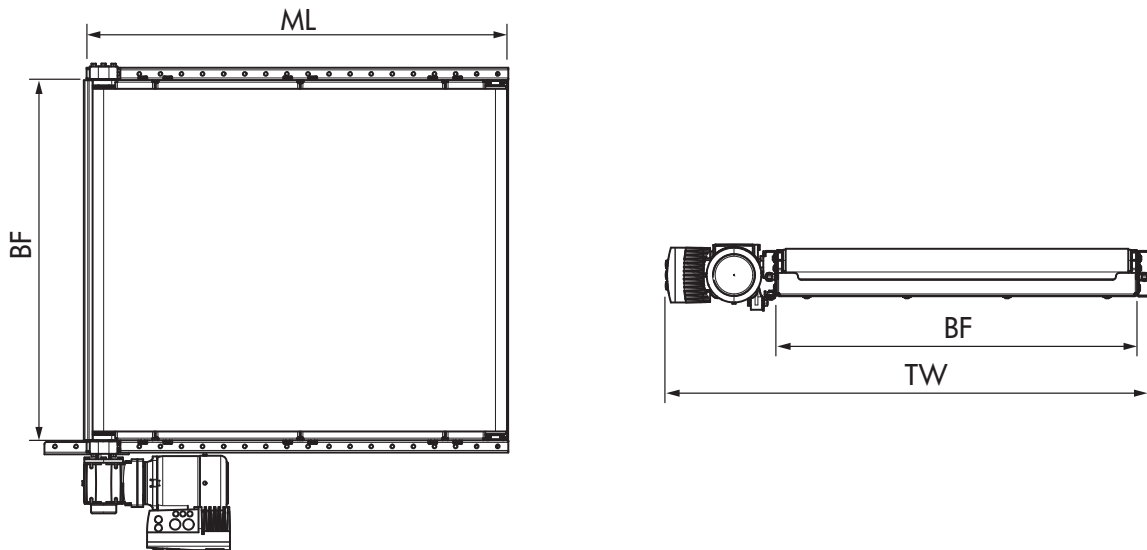


Fig.: Dimensional drawing with gear motor

BF	Rated width	620, 840, 1025, 1225 mm
LW	Clear width	BF
ML	Module length	540, 720, 1080, 1440, 1800, 1980 mm
TW	Module width	BF + 100 mm (drum motor), BF + 375 mm (gear motor)
	Side guide height	150, 300, 600 mm